

CLASSIC RAGLAN CARDIGAN



SKILL LEVEL  Easy

STITCHES USED - 1 x 1 Rib Stocking Stitch and Dot Stitch

MEASUREMENTS

Months		0	3	6	9	12	18
To Fit Underarm	cm	35	40	45	47	50	53
	ins	14	16	18	19	20	21
Actual Size (at underarm)	cm	41	46	52	55	58	61
	ins	16½	18½	21	22	23	24½
Garment Length (approx)	cm	22	26	29	31	33	35
	ins	9	10½	11½	12½	13	14
Sleeve Length (approx)	cm	11	13	16	18	19	21
	ins	4½	5	6½	7	7½	8½

PATONS DREAMTIME 4 PLY 50g balls

Crew Cardigan	3	3	3	4	4	5
Vee Cardigan	3	3	3	4	4	5

NEEDLES AND EXTRAS

- 1 pair each 3.25mm (UK 10) (USA 3) and 2.75mm (UK 12), (USA 2) Needles, or sizes needed to give correct tension.
- A Wool Needle for sewing up.
- **For Crew Cardigan**
- 3 Stitch Holders.
- 6 (7-7-8-8-9) Buttons.
- **For Vee Cardigan**
- 3 (4-4-4-5-5) Buttons.

TENSION

28 sts and 36 rows to 10 cm over stocking st, using 3.25mm Needles.

To work a 15 cm x 15 cm tension square, use 3.25mm Needles, cast on 42 sts. Work 54 rows stocking st. Cast off loosely. Check your tension carefully. If less sts use smaller needles, if more sts use bigger needles.

CREW CARDIGAN

With Correct Tension, your garment will look like our photograph.

BACK

Using 2.75mm Needles, cast on 59 (67-75-79-83-87) sts.

1st row - K2, * P1, K1, rep from * to last st, K1.

2nd row - K1, * P1, K1, rep from * to end.

Rep 1st and 2nd rows 4 (5-5-6-6-7) times ... 10 (12-12-14-14-16) rows rib in all.

Change to 3.25mm Needles.

For Dot Stitch Option -

1st row (right side) - K1, * P1, K3, rep from * to last 2 sts, P1, K1.

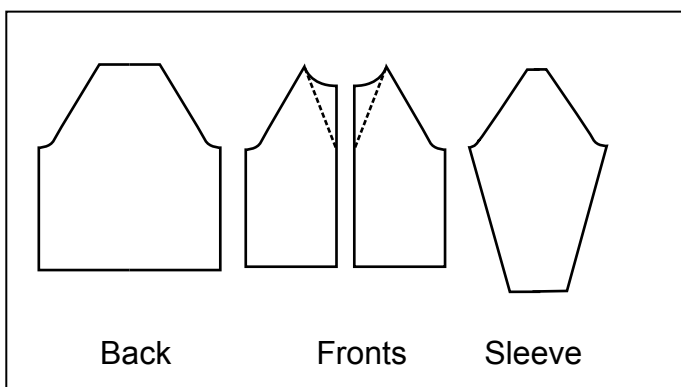
2nd row - Purl.

3rd row - * K3, P1, rep from * to last 3 sts, K3.

4th row - Purl.

Rows to 1 to 4 incl form dot stitch patt.

GARMENT SHAPES



For Stocking Stitch Option -

1st row (right side) - Knit.

2nd row - Purl.

Last 2 rows form stocking st.

For Both Options -

Cont in patt **or** stocking st until work measures 11 (**14-16-17-18-19**) cm from beg, ending with a purl row.

SHAPE RAGLAN ARMHOLES -

Cast off 2 sts at beg of next 2 rows ... 55 (**63-71-75-79-83**) sts.

Dec one st at each end of next row, then in every foll 4th row until 45 (**55-65-71-75-77**) sts rem, then in every foll alt row until 25 (**27-29-29-29-31**) sts rem.

Work 1 row. Leave rem sts on stitch-holder.

LEFT FRONT

Using 2.75mm Needles, cast on 27 (**31-35-39-39-43**) sts.

Work 10 (**12-12-14-14-16**) rows rib as for lower band of Back.

Change to 3.25mm Needles.

Work in either **Dot Stitch** or **Stocking Stitch** as for Back until work measures same as Back to beg of armholes, ending with same patt row as for Back to beg of armhole shaping for **Dot Stitch** or ending with a purl row for **Stocking Stitch**. **

SHAPE RAGLAN ARMHOLE -

Cast off 2 sts at beg of next row ... 25 (**29-33-37-37-41**) sts.

Dec one st at armhole edge in 2nd row, then in every foll 4th row until 20 (**25-30-35-35-38**) sts rem, then in every foll alt row until 15 (**16-17-21-19-23**) sts rem.

SHAPE NECK -

Next row - Cast off 4 (**5-5-6-5-6**) sts, work to end ... 11 (**11-12-15-14-17**) sts.

Dec one st at armhole edge in next row, then in every foll alt row 4 (**4-4-6-6-7**) times, AT SAME TIME dec one st at neck edge in next row, then in every foll alt row 3 (**3-4-5-4-6**) times ... 2 sts.

Next row - P2, turn, K2tog. Fasten off.

RIGHT FRONT

Work as for Left Front to **.

Work 1 row.

SHAPE RAGLAN ARMHOLE -

Cast off 2 sts at beg of next row ... 25 (**29-33-37-37-41**) sts.

Dec one st at armhole edge in next row, then in every foll 4th row until 20 (**25-30-35-35-38**) sts rem, then in every foll alt row until 16 (**17-18-22-20-24**) sts rem. Work 1 row.

SHAPE NECK -

Next row - Cast off 4 (**5-5-6-5-6**) sts, work to last 2 sts, K2tog ... 11 (**11-12-15-14-17**) sts.

Dec one st at armhole edge in every foll alt row 5 (**5-5-7-7-8**) times, AT SAME TIME dec one st at neck edge in every foll alt row 4 (**4-5-6-5-7**) times ... 2 sts.

Next row - P2, turn, K2tog. Fasten off.

SLEEVES

Using 2.75mm Needles, cast on 35 (**39-43-43-47-47**) sts.

Work 10 (**12-12-14-14-16**) rows rib as for lower band of Back.

Change to 3.25mm Needles.

For Dot Stitch Option -

Work 4 rows dot stitch patt as for Back.

For Stocking Stitch Option -

Work 4 rows stocking st as for Back.

For Both Options -

Cont in patt **or** stocking st, inc one st at each end of next row, then in every foll - alt (**alt-6th-4th-6th-6th**) row until there are 45 (**45-53-51-59-61**) sts, then in every foll - 4th (**4th-8th-6th-8th-8th**) row until there are 49 (**53-55-59-61-63**) sts.

Cont without shaping until work measures 11 (**13-16-18-19-21**) cm (or length desired) from beg, ending with a purl row.

SHAPE RAGLAN -

Cast off 2 sts at beg of next 2 rows ... 45 (**49-51-55-57-59**) sts.

Dec one st at each end of next row, then in every foll - alt (**alt-alt-alt-alt-4th**) row until 7 (**7-5-7-5-55**) sts rem, **sizes 0, 3, 9 and 18 months only** - then in every (**every-every-alt**) row until 5 sts rem.

Sizes 6, 12 and 18 months only - Work 1 row.

All sizes - Leave rem sts on stitch-holder.

NECKBAND

Using wool needle and mattress st seam, join raglan seams, noting that tops of sleeves form part of neckline. With right side facing and

using 2.75mm Needles, knit up 16 (**18-18-24-24-26**) sts evenly along right side of neck, knit across sts from right sleeve stitch-holder, knit across sts from back stitch-holder, knit across sts from left sleeve stitch-holder, then knit up 16 (**18-18-24-24-26**) sts evenly along left side of neck ... 67 (**73-75-87-87-93**) sts.

Work 9 (**9-11-11-11-13**) rows rib as for lower band of Back, beg with a 2nd row. Cast off loosely in rib.

RIGHT FRONT BAND FOR GIRL OR LEFT FRONT BAND FOR BOY

Using 2.75mm Needles, cast on 9 sts.

Work 4 rows rib as for lower band of Back.

5th row - Rib 4, cast off 2 sts, rib 3.

6th row - Rib 3, **turn**, cast on 2 sts, **turn**, rib 4 ... buttonhole. Work 16 rows rib.

Replast 18 rows 4 (**5-5-6-6-7**) times, then buttonhole rows once ... 6 (**7-7-8-8-9**) buttonholes.

Work 4 rows rib. Cast off loosely in rib.

LEFT FRONT BAND FOR GIRL OR RIGHT FRONT BAND FOR BOY

Work to correspond with other front band, omitting buttonholes.

MAKE UP

With a slightly damp cloth and warm iron (unless stated otherwise on ball band), press lightly on wrong side. Using wool needle and mattress st seam, join side and sleeve seams. Using a flat seam, sew front bands in position. Sew on buttons. Sew in all ends. Press seams.

VEE CARDIGAN BACK AND SLEEVES

Work as for Back and Sleeves of **Crew Cardigan**, noting to cast off rem sts loosely at back neck and tops of sleeves, instead of leaving on stitch-holders.

LEFT FRONT

Work as for Left Front of **Crew Cardigan** to **.

SHAPE ARMHOLE & FRONT SLOPE - Cast off 2 sts at beg of next row ... 25 (**29-33-37-37-41**) sts.

Dec one st at armhole edge in 2nd row, then in every foll 4th row 4 (**3-2-1-1-2**) time/s, then in every foll alt row 10 (**14-18-21-23-23**) times, AT SAME TIME dec one st at **end** (front edge) in 2nd row, then in every foll 4th row 4 (**5-6-10-3-10**) times, then in every foll 6th row 3 (**3-3-1-6-2**) time/s ... 2 sts.

Next row - P2, **turn**. K2tog. Fasten off.

RIGHT FRONT

Work as for Left Front of **Crew Cardigan** to **.

Work 1 row.

SHAPE ARMHOLE & FRONT SLOPE -

Cast off 2 sts at beg of next row ... 25 (**29-33-37-37-41**) sts.

Dec one st at armhole edge in next row, then in every foll 4th row 4 (**3-2-1-1-2**) time/s, then in every foll alt row 10 (**14-18-21-23-23**) times, AT SAME TIME dec one st at **beg** (front edge) in next row, then in every foll 4th row 4 (**5-6-10-3-10**) times, then in every foll 6th row 3 (**3-3-1-6-2**) time/s ... 2 sts.

Next row - P2, **turn**. K2tog. Fasten off.

FRONT BAND

Using wool needle and mattress st seam, join raglan seams, noting that tops of sleeves form part of neckline.

Using 2.75mm Needles, cast on 9 sts.

Work 4 rows rib as for lower band of Back.

5th row - Rib 4, cast off 2 sts, rib 3.

6th row - Rib 3, **turn**, cast on 2 sts, **turn**, rib 4 ... buttonhole.

Work 16 (**14-16-16-14-16**) rows rib.

Rep last 18 (**16-18-18-16-18**) rows 1 (**2-2-2-3-3**) time/s, then buttonhole rows once ... 3 (**4-4-4-5-5**) buttonholes.

Cont in rib without shaping until band fits (slightly stretched) evenly along fronts, tops of sleeves and across back neck, ending with a 2nd row.

Cast off in rib.

MAKE UP

With a slightly damp cloth and warm iron (unless stated otherwise on ball band), press lightly on wrong side. Using wool needle and mattress st seam, join side and sleeve seams. Using a flat seam, sew front band in position, placing buttonholes to right front for **Girl** and left front for **Boy**. Sew on buttons. Sew in all ends. Press seams.